

# Support Planning



- This information is written in an easy to read way.



- We use pictures to explain some ideas.



- You can ask for help to read this information.



- A family member, friend or support person may be able to help you.

# How do we provide NDIS supports at Miroma Inc?



- We work with each person, and their support network to assess support needs and develop a Support Plan



- The Support Plan will show how we will work together to achieve goals



- We will review the Support Plan with each person and their support network **at least once a year.**
- This is to make sure it is meeting each person's needs and goals.
- If not, it will be changed



- We make sure that our workers are trained to understand each person's needs and preferences

## About our Supports



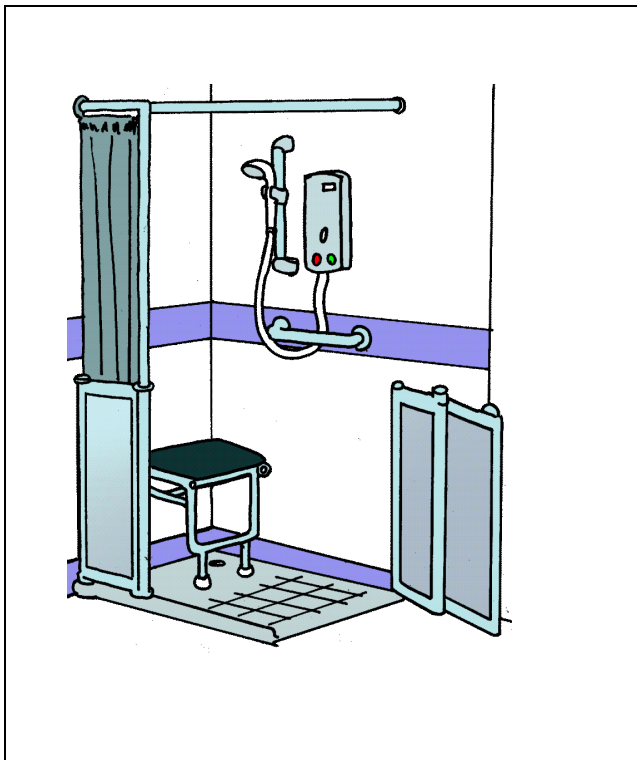
- We provide respite for families by providing a home away from home for child and adult participants.



- We can assist you in your home with daily task such as:
- Helping you cook and plan your meals



- Getting ready for School and/or Work



- Personal Care, including showering, dressing and other daily living skills



- Supporting you with community-based activities
- Supporting you to socialise and with your friends and family



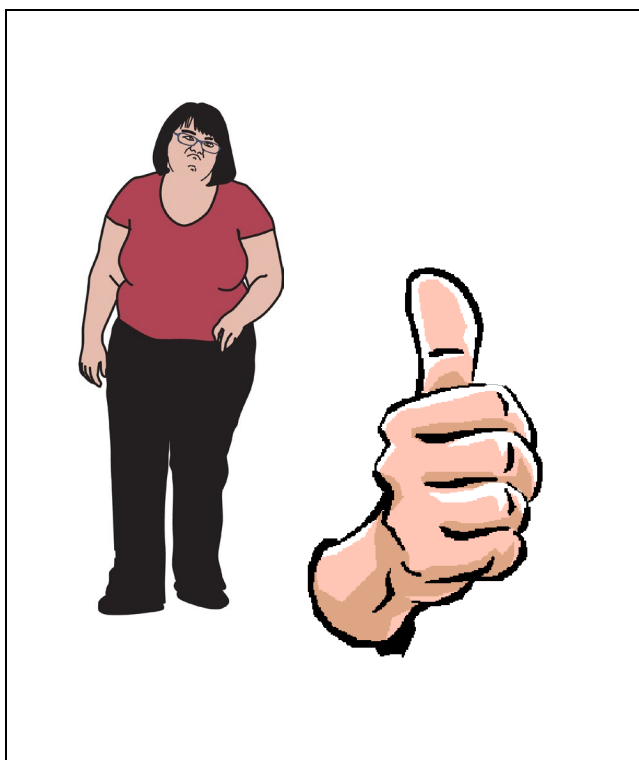
- We support you to live independently within the local community

## Can I have my friend or family member help me decide?



- **Yes** – you can choose a person to help you make decisions.

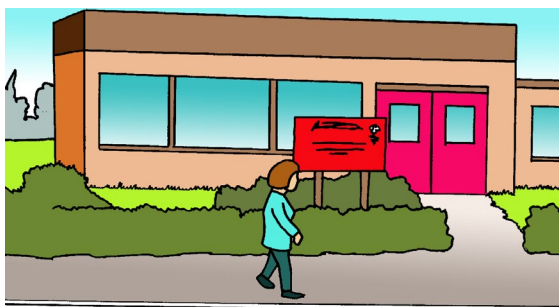
## What if I change my mind?



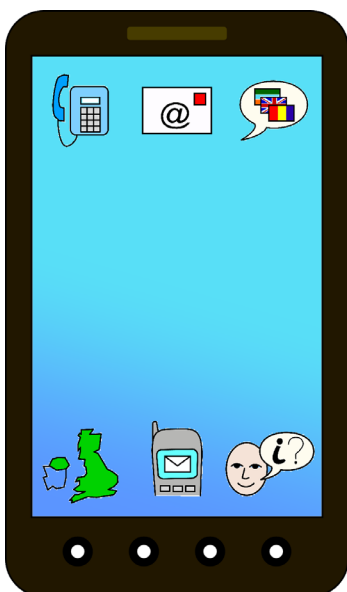
- It is **OK** to change your mind.
- We will support you with every choice that you make



## Contact us



- You can speak to our someone at our Head office **14 Krummel Street, Mount Gambier, SA**



- You can call us on (08) 8725 0681
- Or
- You can visit our website [Miroma Inc](#)

## **Resources**

Easy English written by Engels Floyd & Associates

<https://engelsfloyd.com>

ClipArt © Inspired Services, UK.

[www.inspiredservices.org.uk](http://www.inspiredservices.org.uk)